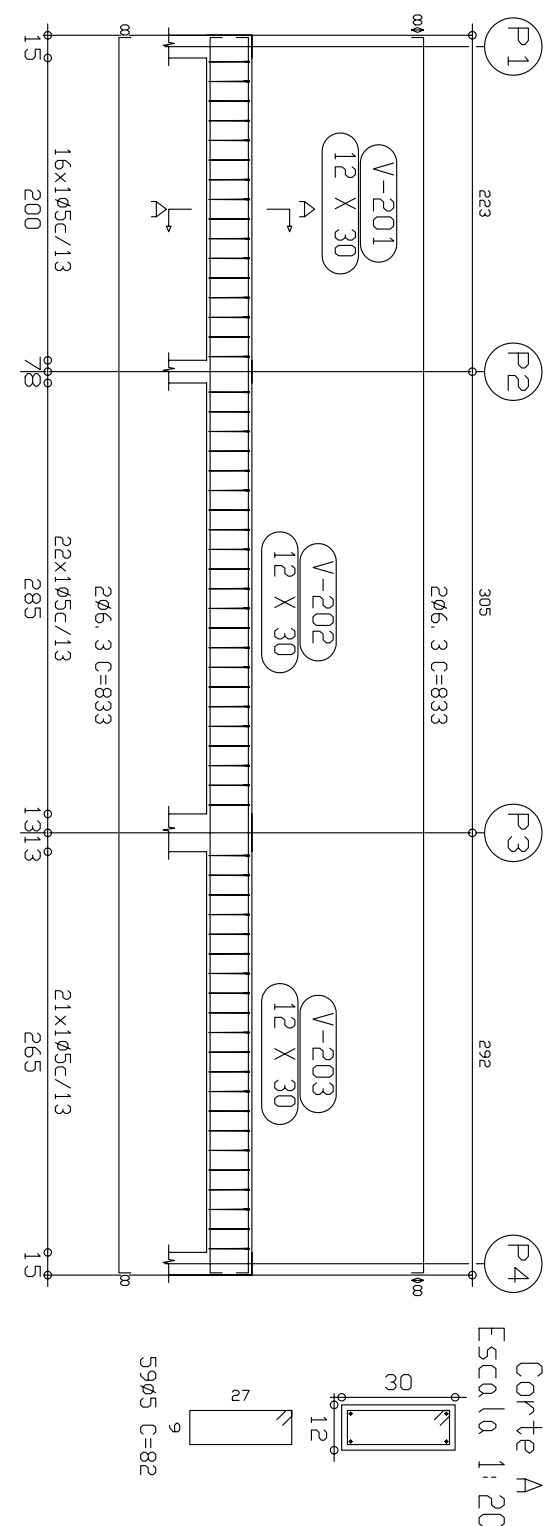
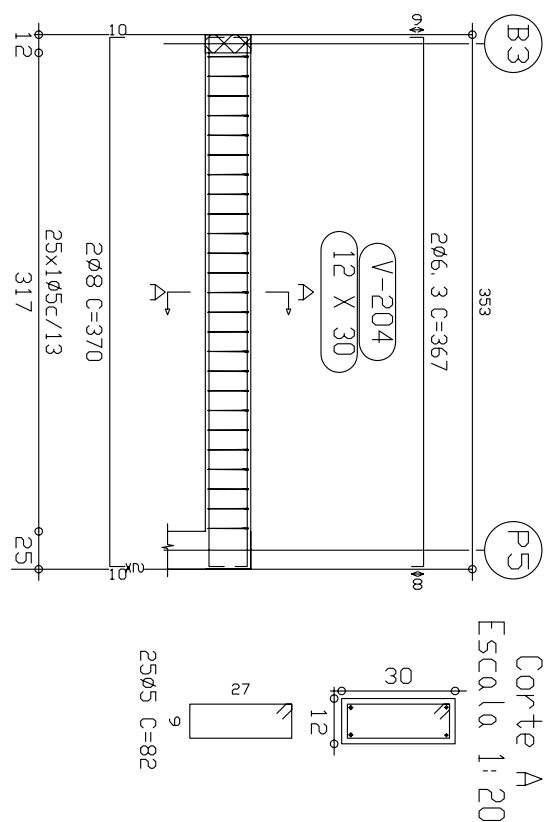


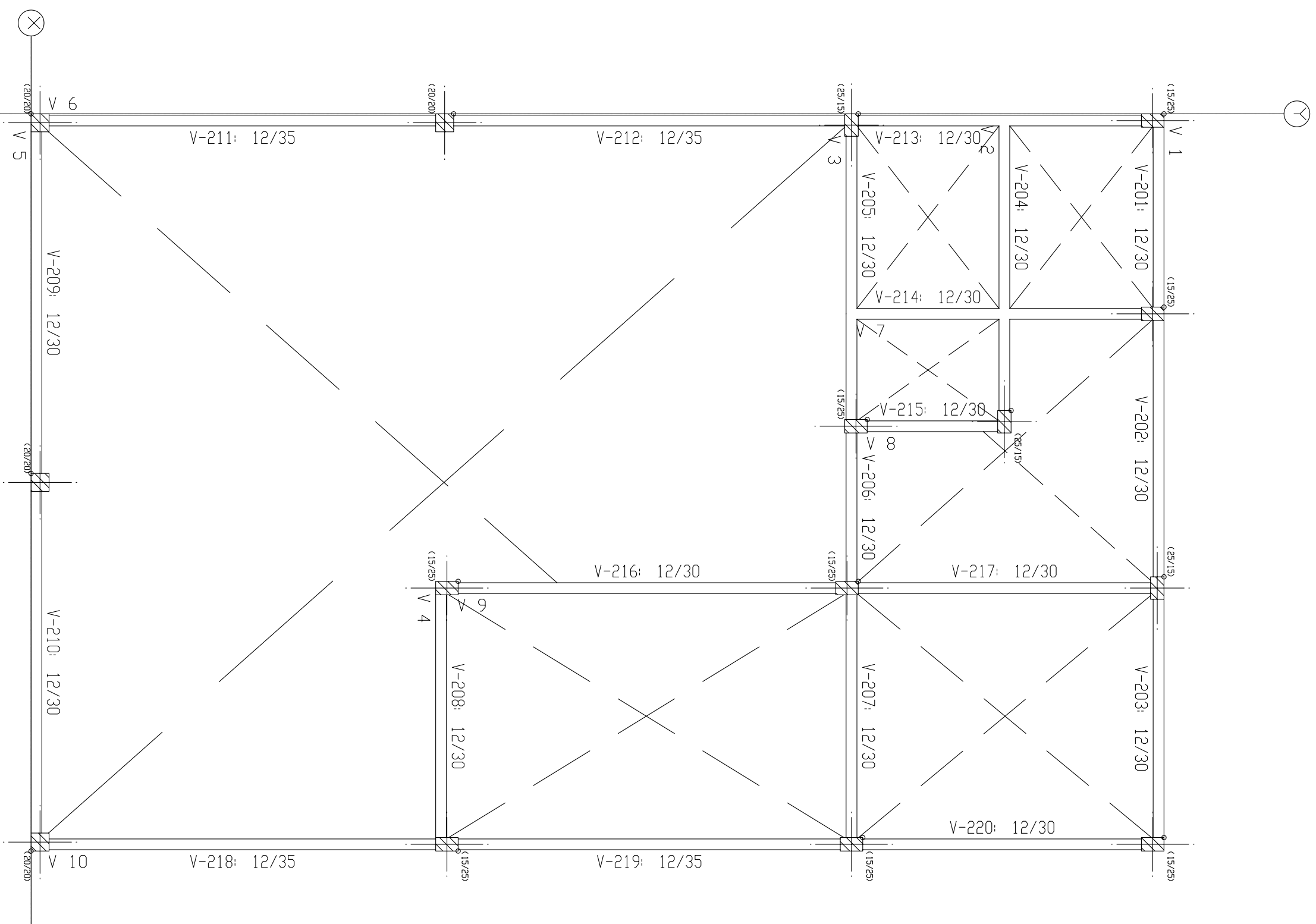
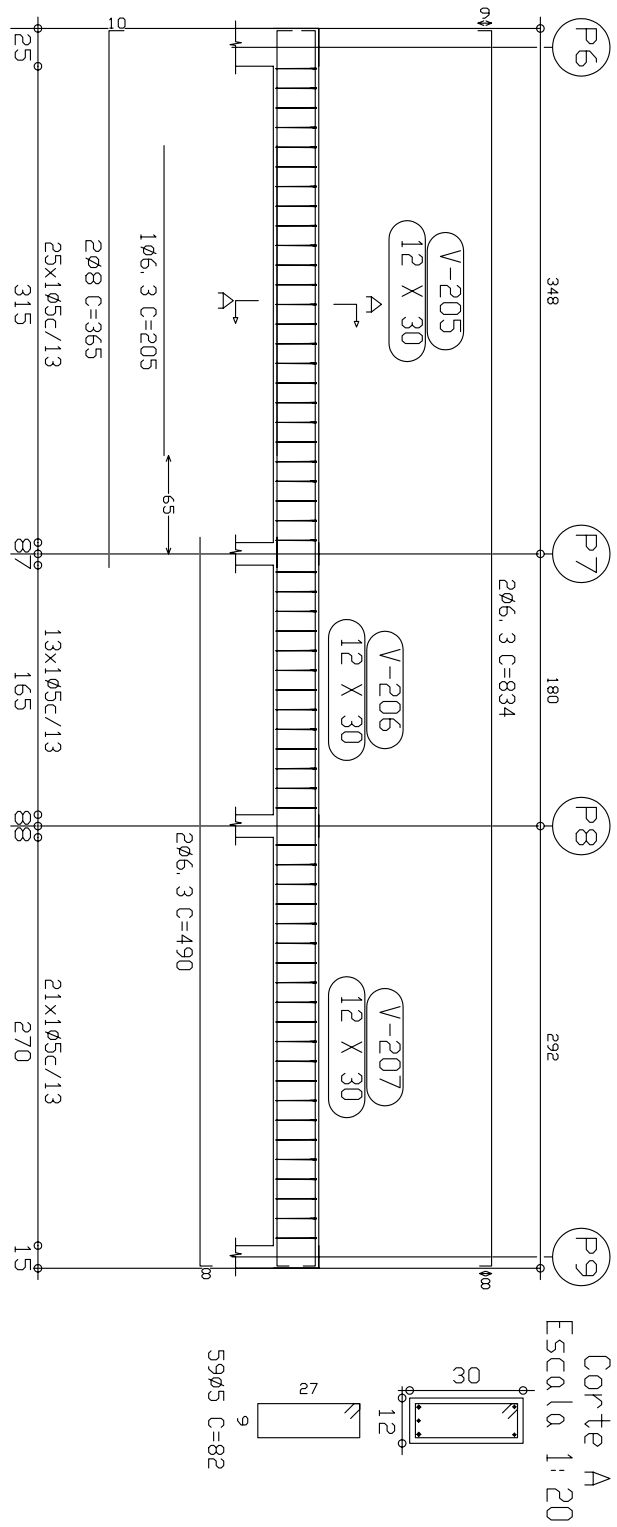
V 1
Escala 1: 50



V 2
Escala 1: 50

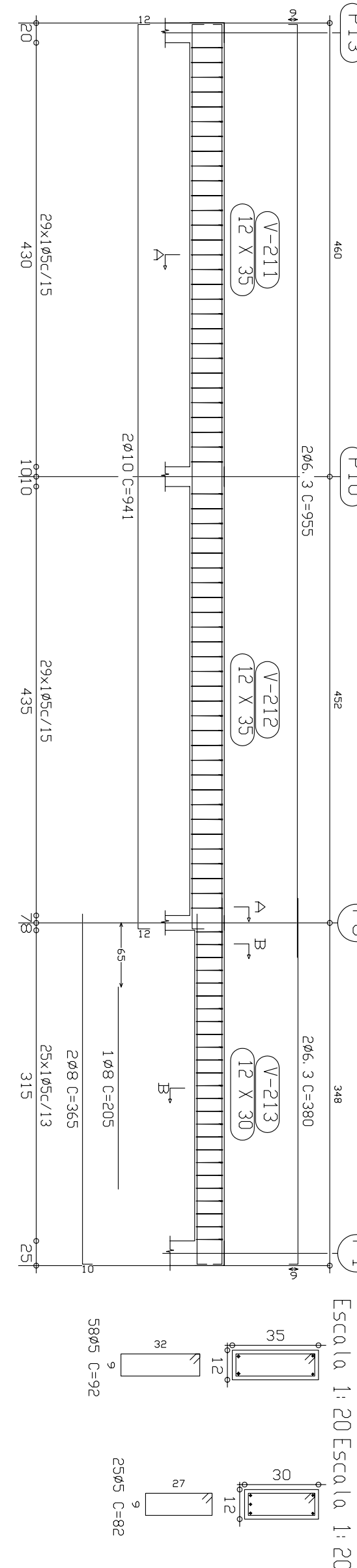


V 3
Escala 1: 50

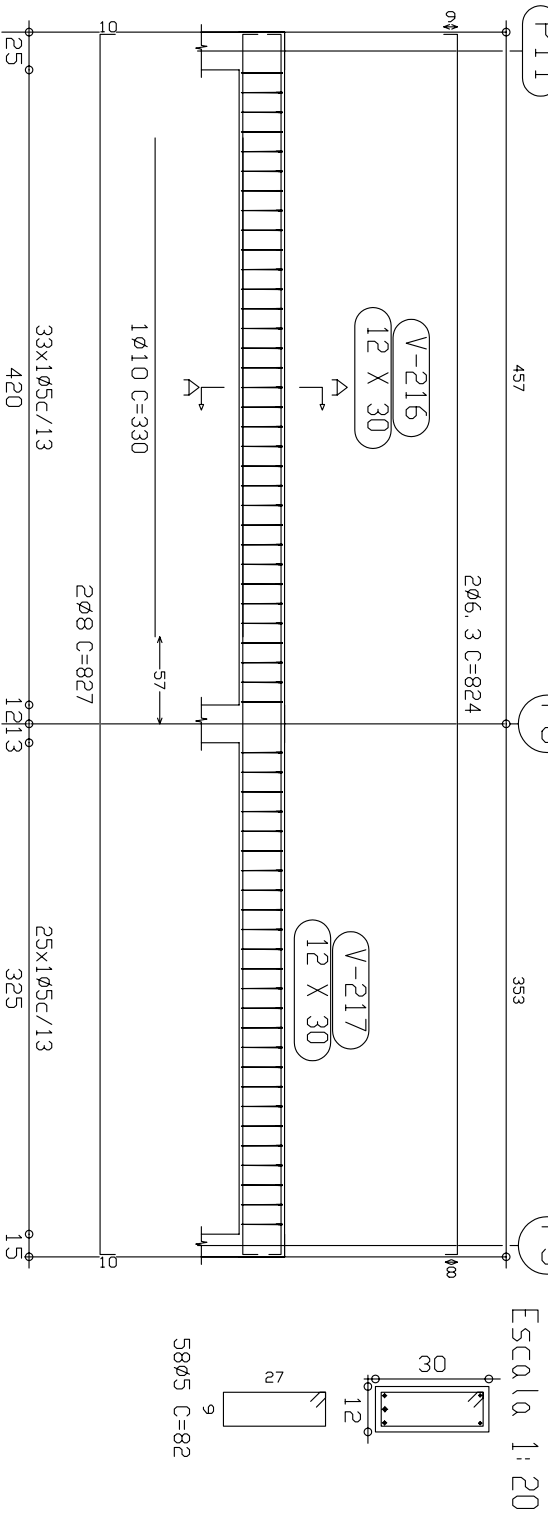


PLANTA DE FORMAS VIGAS CINTA
ESCALA: 1/50
CONCRETO: C25 - 25MPa

V 6
Escala 1: 50

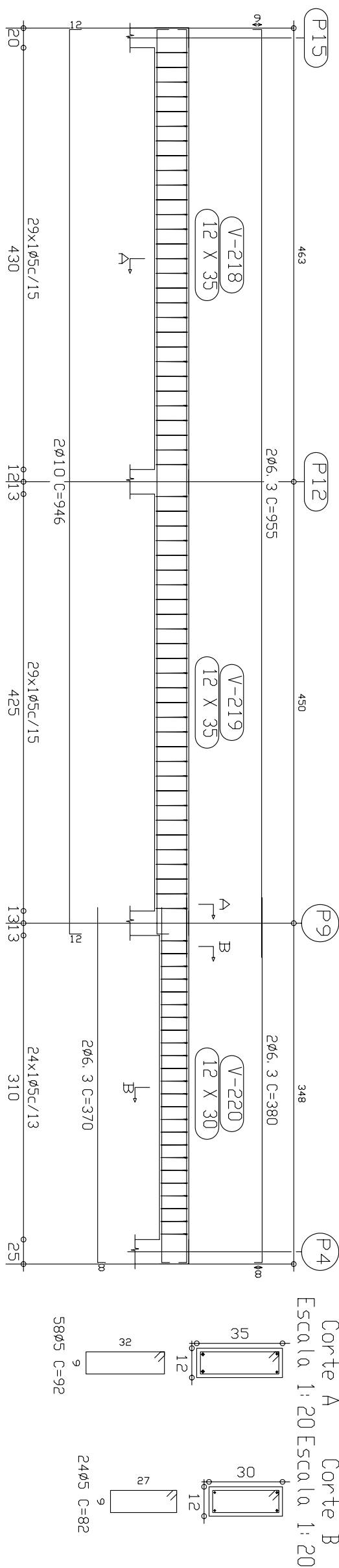


V 9
Escala 1: 50



Cinta - Superfície total: 8,24 m ²				
Elemento	Formas (m ²)	Volume (m ³)	Barras (kg)	Dobrado (kg)
VIGAS Fundo	7,67	2,63	178	
Forma lateral	39,89	1,62	245	
Pilares (Sup. Formas)	33,00			
TOTAL	80,56	4,25	423	
Índices (por m ²)	9,777	0,516	51,33	

V 10
Escala 1: 50



RESUMO	AÇO	Comp.	Total	Peso (com perdas)	Total
Cinta					
VIGAS					
CA-50-A-Ø6.3	199.1		54		
Ø8	57.3		25		
Ø10	41.0		28		
CA-60-B-Ø5	412.5		71		
Total					178



MUNICÍPIO DE CHOPINZINHO
GESTÃO 2017 - 2020
DIVISÃO DE PLANEJAMENTO E PROJETOS

ESTRUTURAL - CINTAMENTO

Especificação:	Escala:
Tipo da Obra:	Ind.
Copa nova	
Local da Obra:	
Módulo Esportivo Municipal	
Proprietário:	Christiano
PREFEITURA MUNICIPAL DE CHOPINZINHO	Área (m ²): 103,32 m ²
Chefe Executivo Municipal:	Francisco
Respp. Técnico:	
ALVARO DENIS GEM SOULARO	CHRISTIANO DOSSA SILVEIRI
Ass. Responsável:	

E 02